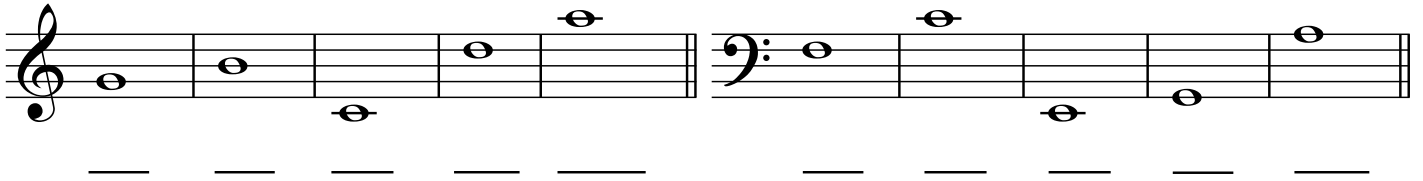


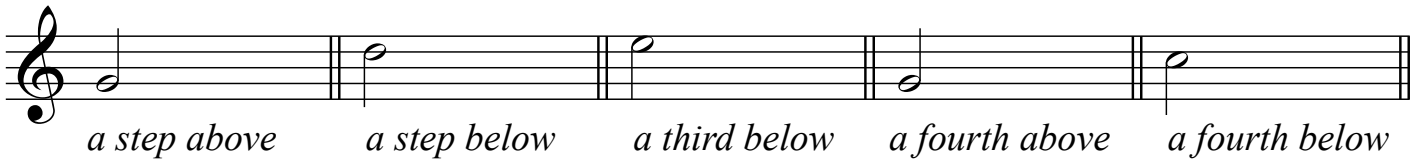
NAME:
CCM — Adult Theory Assessment

Write the names of the notes on the line under each note



Two musical staves are shown. The first staff is in treble clef and contains five whole notes: G4, A4, B4, C5, and D5. The second staff is in bass clef and contains five whole notes: F3, E3, D3, C3, and B2. Below each staff is a horizontal line with five dashes, intended for writing the names of the notes.

Please write the indicated interval



A single musical staff in treble clef contains five pairs of notes, each pair separated by a double bar line. The intervals are: a step above (C4 to D4), a step below (D4 to C4), a third below (D4 to B3), a fourth above (C4 to F4), and a fourth below (D4 to A3). Below each pair is a label: *a step above*, *a step below*, *a third below*, *a fourth above*, and *a fourth below*.

Notate the following intervals



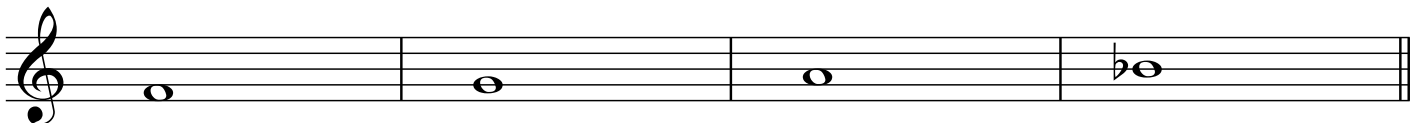
A single musical staff in treble clef contains six pairs of notes, each pair separated by a double bar line. The intervals are: m6 down (G4 to B3), M7 down (G4 to F3), diminished 5 down (G4 to C4), A2 up (G4 to A4), P5 up (G4 to D5), and m3 up (G4 to B4). Below each pair is a label: *m6 down*, *M7 down*, *diminished 5 down*, *A2 up*, *P5 up*, and *m3 up*.

Construct Major triads, assuming that the given notes are the roots of the chord



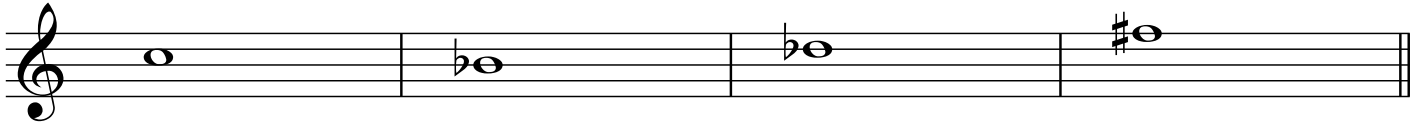
A single musical staff in treble clef contains four whole notes: C4, E4, G4, and B4, each in a separate measure.

Construct minor triads, assuming that the given notes are the thirds of the chord

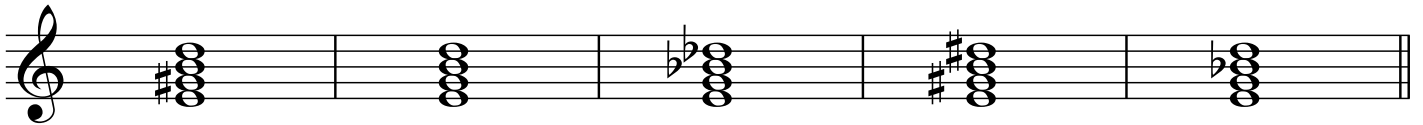


A single musical staff in treble clef contains four whole notes: C4, E4, G4, and Bb4, each in a separate measure.

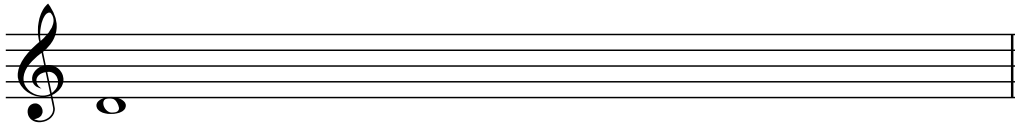
Construct Major triads, assuming that the given notes are the fifths of the chord



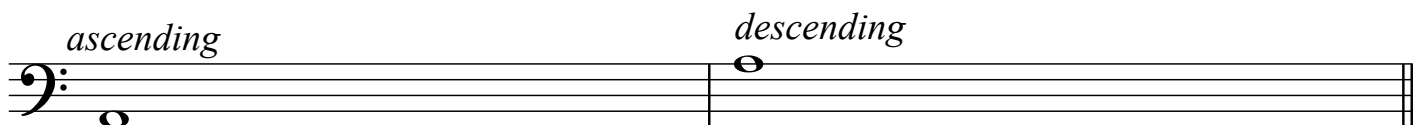
Identify the quality of these seventh chords



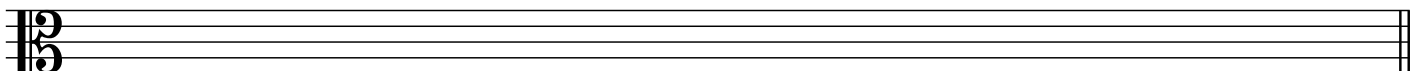
Write the natural minor scale that begins on D—don't forget the accidentals!



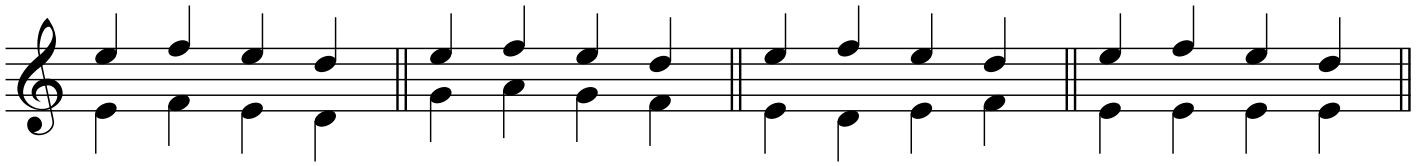
Write the melodic minor scale that begins on A—don't forget the accidentals!



Write the chromatic scale from middle C to the octave above



For each measure, describe the motion between the notes with the stems-up and the notes with the stems-down



A musical staff in treble clef with a 4/4 time signature. It contains four measures, each separated by a double bar line. Each measure consists of two lines of notes. The first line has four notes with stems pointing up, and the second line has four notes with stems pointing down. The notes in each measure are: G4, A4, B4, C5 (up); F4, E4, D4, C4 (down). The notes are connected by a single line, indicating a melodic line.

Identify the type of cadences at the three fermatas



Three measures of music in 4/4 time, each ending with a fermata. The first measure shows a treble clef with a chord of G4, B4, D5 and a bass clef with a chord of G3, B2, D3. The second measure shows a treble clef with a chord of G4, B4, D5 and a bass clef with a chord of G3, B2, D3. The third measure shows a treble clef with a chord of G4, B4, D5 and a bass clef with a chord of G3, B2, D3. The notes are connected by a single line, indicating a melodic line.

Label the intervals between bass and soprano and identify the contrapuntal device used in each measure



Two pairs of musical staves. The first pair shows a treble clef with a melodic line and a bass clef with a bass line. The second pair shows a treble clef with a melodic line and a bass clef with a bass line. The notes are connected by a single line, indicating a melodic line.

Analys: Comment on and critique your choice of the following three examples

A

Musical notation for example A: A single staff in treble clef with a key signature of one sharp (F#) and a time signature of 2/4. The melody consists of quarter notes: F#4, G4, A4, B4, C5, B4, A4, G4, F#4, E4, D4, C4. There are two accents (^) above the first and fourth notes. The dynamic markings *p* and *mf* are placed below the staff.

B

Musical notation for example B: Two staves, treble and bass clef, with a key signature of one sharp (F#) and a time signature of 3/4. The melody is written across both staves. The treble staff contains notes: F#4, G4, A4, B4, C5, B4, A4, G4, F#4, E4, D4, C4. The bass staff contains notes: F#3, G3, A3, B3, C4, B3, A3, G3, F#3, E3, D3, C3. A large slur encompasses the entire piece.

C

Musical notation for example C: Two staves, treble and bass clef, with a key signature of two flats (Bb, Eb) and a time signature of 4/4. The melody is written across both staves. The treble staff contains notes: Bb4, Ab4, Gb4, Fb4, Eb4, D4, C4, Bb4, Ab4, Gb4, Fb4, Eb4, D4, C4. The bass staff contains notes: Bb3, Ab3, Gb3, Fb3, Eb3, D3, C3, Bb3, Ab3, Gb3, Fb3, Eb3, D3, C3. A large slur encompasses the entire piece.