

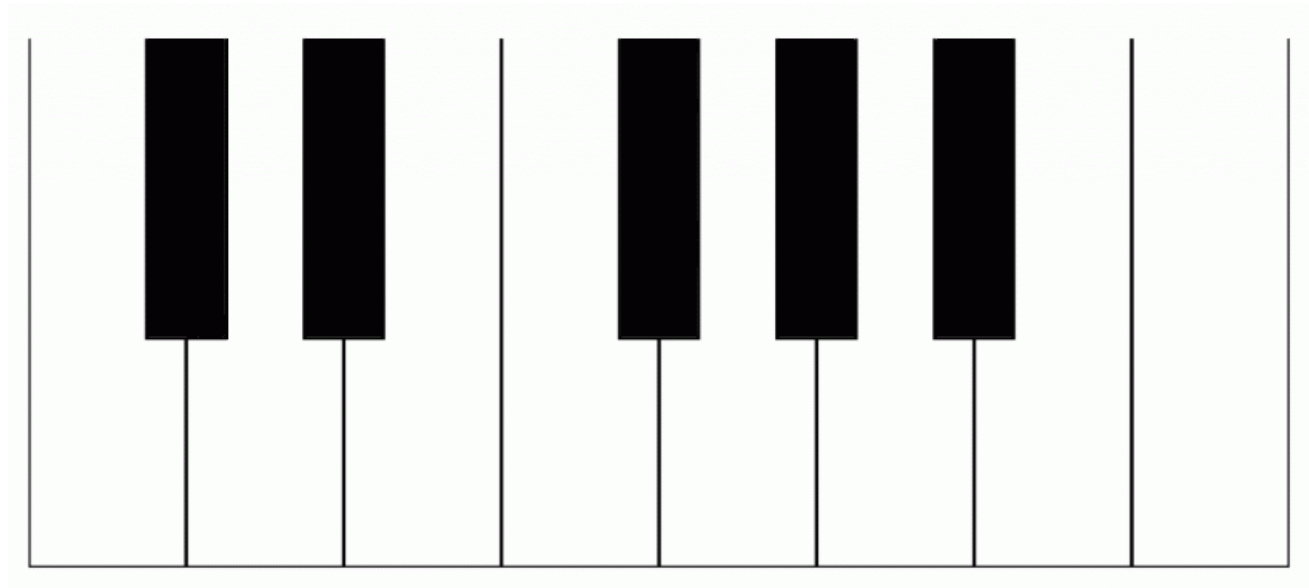
NAME \_\_\_\_\_

# Level 1 Worksheet

Write the names of the notes on the line under each note

A grand staff consisting of a treble clef on the left and a bass clef on the right. The treble clef staff contains five whole notes: G4, A4, B4, C5, and D5. The bass clef staff contains five whole notes: F3, E3, D3, C3, and B2. Below each of the ten notes is a horizontal line for writing the note's name.

Can you name all of the keys on this keyboard?



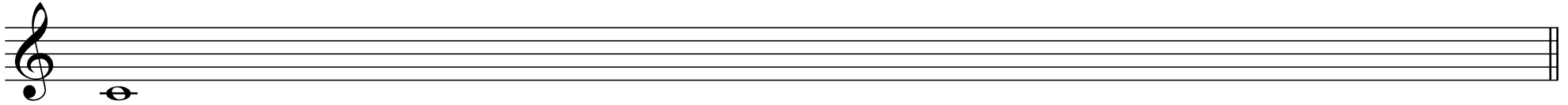
Write the name of the rhythm value on the line

Five musical staves, each with a treble clef and a single note. The notes are: 1. A whole note (labeled 'whole note' below it), 2. A half note, 3. A quarter note, 4. An eighth note, and 5. A sixteenth note. Below each staff is a horizontal line for writing the name of the rhythm value.

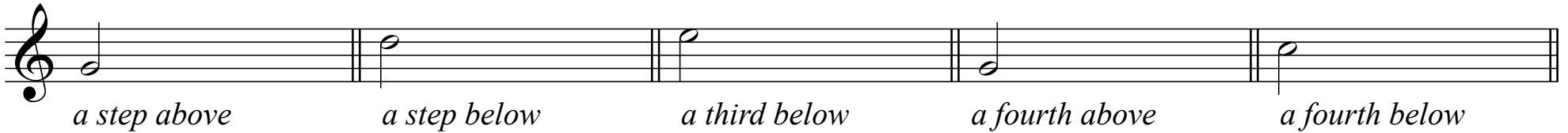
This little melody has lost its bar-lines! Can you draw them?



Please write the Major scale that begins on middle C ---can you identify where the half-steps are?



Please write the indicated interval



**If this worksheet was challenging, please return your packet to the office.  
If this worksheet was easy, please continue onto worksheet #2.**

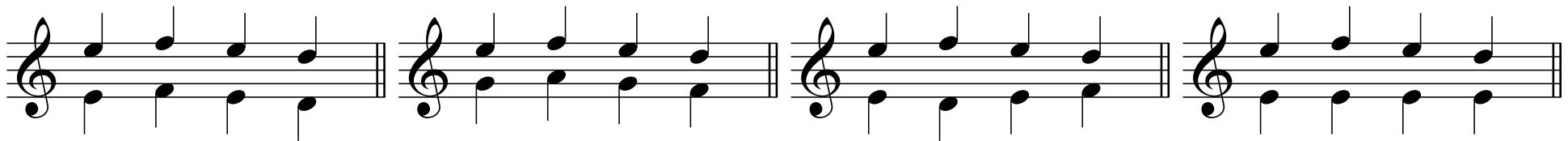
# Level 2.1 worksheet

Please add the notes asked for



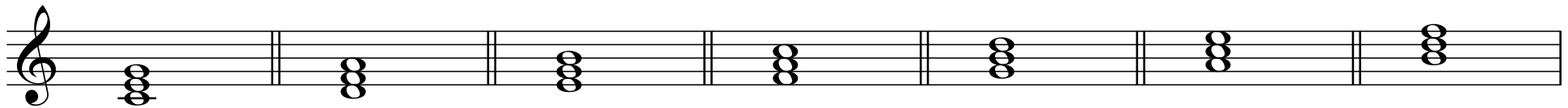
A musical staff in treble clef divided into four measures by double bar lines. Each measure contains a single note on a specific line of the staff. Below each measure is a text label: 'whole-step above', 'half-step below', 'Major third above', and 'perfect fourth below'. The notes are on the first, second, third, and fourth lines from bottom to top, respectively.

For each measure, describe the motion between the notes with the stems-up and the notes with the stems-down



A musical staff in treble clef divided into four measures by double bar lines. Each measure contains two notes: one with a stem pointing up and one with a stem pointing down. The notes are on the first, second, third, and fourth lines from bottom to top, respectively. The stems-up notes are on the first, second, and third lines, while the stems-down notes are on the second, third, and fourth lines.

Identify the quality of these seven triads



A musical staff in treble clef divided into seven measures by double bar lines. Each measure contains a triad of three notes stacked vertically. The notes are on the first, second, and third lines from bottom to top, respectively.

Construct Major triads, assuming that the given notes are the roots of the chord

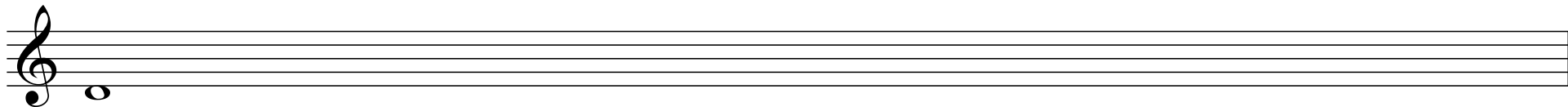
Construct minor triads, assuming that the given notes are the thirds of the chord



A musical staff in treble clef divided into six measures by double bar lines. The notes are on the first, second, and third lines from bottom to top, respectively. The first three measures contain notes on the first, second, and third lines. The last three measures contain notes on the second, third, and fourth lines.

## Level 2.2 worksheet

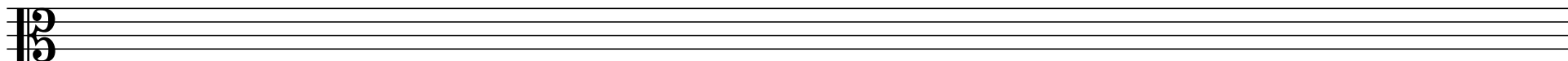
Write the natural minor scale that begins on D—don't forget the accidentals!



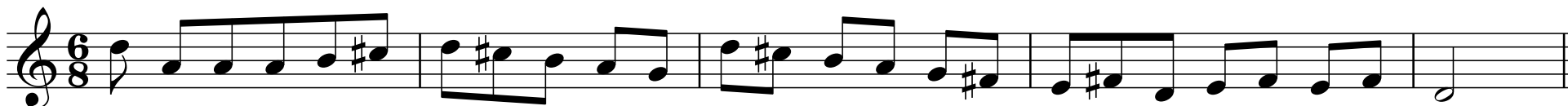
Write the melodic minor scale that begins on A—don't forget the accidentals!



Write the chromatic scale from middle C to the octave above



Identify ANY rhythmic errors you see in the following passage.



**If this worksheet was challenging, please return your packet to the office.  
If this worksheet was easy, please continue onto worksheet #3.**

# Level 3 worksheet

Identify the quality of these intervals

Three musical staves in 4/4 time. The first staff (treble clef) shows two intervals: a major 6th (G4 to E5) and a major 7th (F#4 to E5). The second staff (bass clef) shows two intervals: a diminished 5th (G3 to C4) and a 2nd (A2 to B2). The third staff (bass clef) shows two intervals: a perfect 5th (G2 to D3) and a minor 3rd (B2 to D3).

Notate the following intervals

Six musical staves in 4/4 time. The first two staves (treble clef) show a major 6th down and a major 7th down. The next two staves (bass clef) show a diminished 5th down and a 2nd up. The last two staves (bass clef) show a perfect 5th up and a minor 3rd up.

*m6 down*      *M7 down*      *diminished5 down*      *A2 up*      *P5 up*      *m3 up*

Identify the quality of these seventh chords

Five musical staves in 4/4 time, each showing a seventh chord in treble clef. From left to right: F#7 (F#4, A4, C5, E5), G7 (G4, B4, D5, F#5), Bb7 (Bb4, D5, F5, Ab5), C#7 (C#4, E4, G4, B4), and Bb7 (Bb4, D5, F5, Ab5).

Identify the type of cadences at the three fermatas

Three musical systems in 4/4 time, each with a fermata at the end. The first system shows a major triad (C4, E4, G4) in the treble and a bass line (C4, E4, G4) in the bass. The second system shows a major triad (C4, E4, G4) in the treble and a bass line (C4, E4, G4) in the bass. The third system shows a major triad (C4, E4, G4) in the treble and a bass line (C4, E4, G4) in the bass.

Level 3 worksheet, continued

What is wrong with the motion between the Alto and Bass voices in this example?

Complete the Tenor part to follow the progression

Realize the progression for four voices

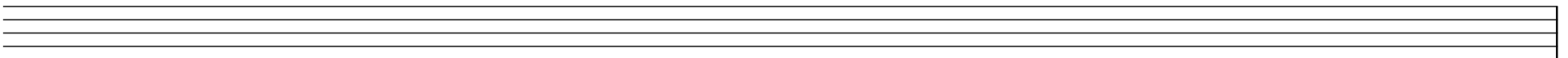
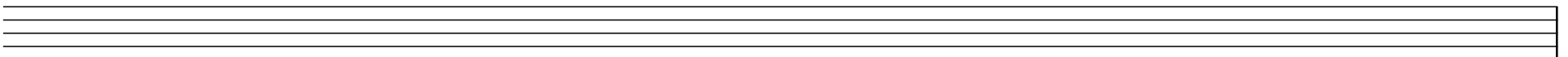
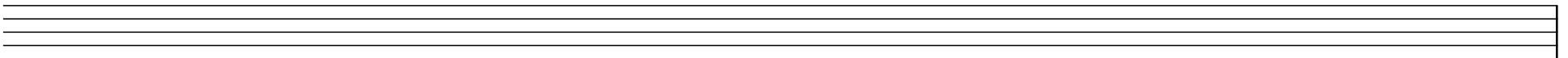
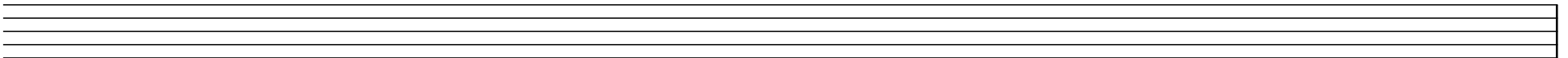
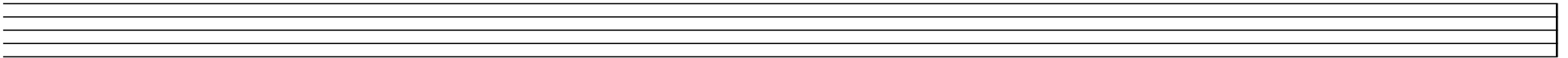
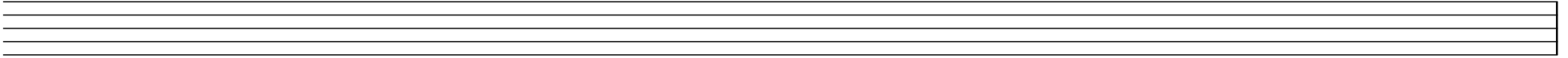
I IV<sup>6</sup><sub>4</sub> I V<sup>6</sup><sub>5</sub> I vi IV V

Label the intervals between bass and soprano and identify the contrapuntal device used in each measure

**Please return your packet to the office.  
Bonus worksheets follow...**

# Bonus Worksheet # 1

Use these blank staves, or a page from your own staff paper, to compose a piece of music for whichever instrument(s) you choose



**Please return your packet to the office.  
One more bonus worksheet follows...**

Analys: Comment on and critique your choice of the following three examples

## Bonus Worksheet # 2

**A**

Musical notation for example A, featuring a single staff in treble clef with a key signature of one sharp (F#) and a time signature of 2/4. The piece begins with a piano (*p*) dynamic and a *mf* dynamic. The melody consists of eighth and quarter notes, with some notes marked with accents (*>*).

**B**

Musical notation for example B, consisting of two staves in treble and bass clefs with a 3/4 time signature. The melody is written in the treble clef and the bass line in the bass clef. Both parts feature long, sweeping phrases with slurs, indicating a continuous melodic line.

**C**

Musical notation for example C, consisting of two staves in treble and bass clefs with a 4/4 time signature and a key signature of two flats (Bb, Eb). The melody is written in the treble clef and the bass line in the bass clef. The piece features a variety of note values, including eighth, quarter, and half notes, with some slurs and ties.

Please return your packet to the office.