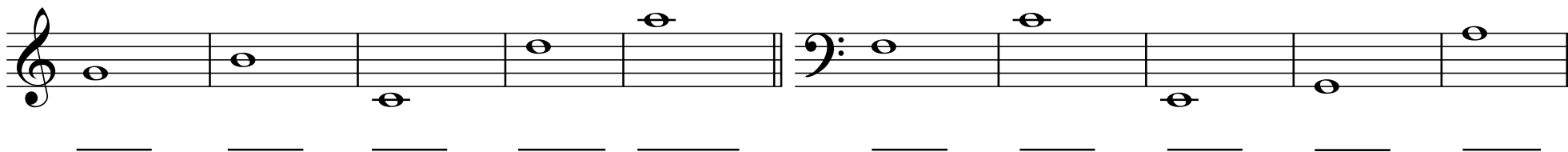
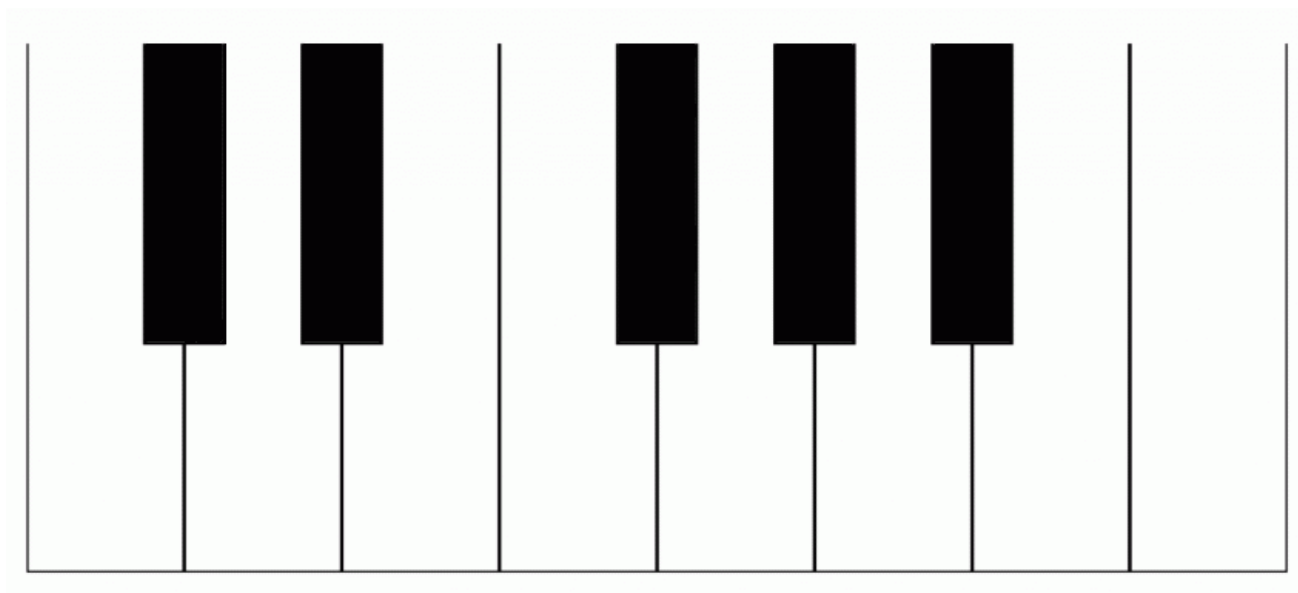


Write the names of the notes on the line under each note

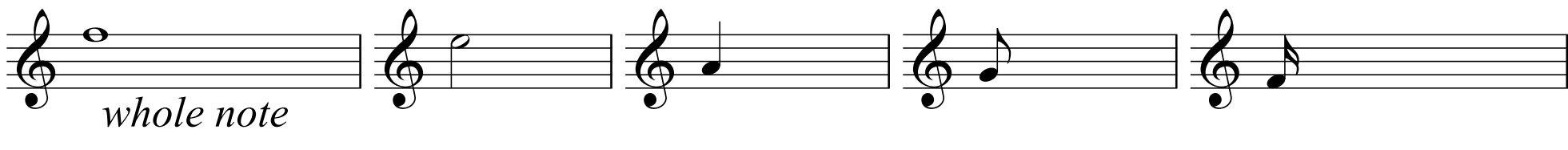


A grand staff consisting of a treble clef on the left and a bass clef on the right. The treble clef staff contains five whole notes: G4, A4, B4, C5, and D5. The bass clef staff contains five whole notes: F3, E3, D3, C3, and B2. Below each of the ten notes is a horizontal line for labeling.

Can you name all of the keys on this keyboard?

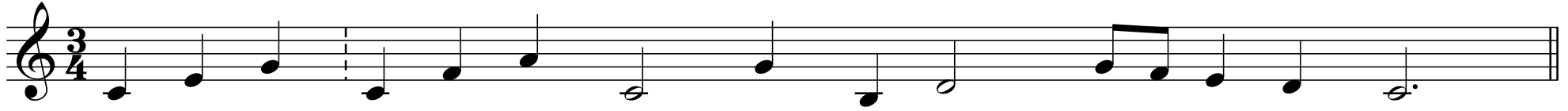


Write the name of the rhythm value on the line

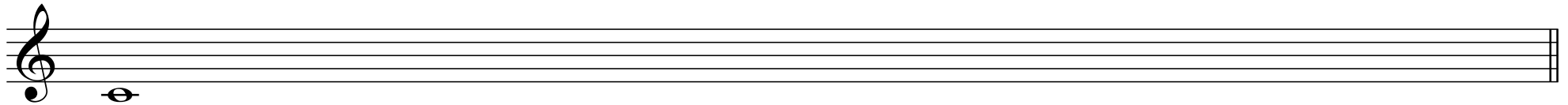


Five musical staves, each with a treble clef. The first staff contains a whole note, with the text "whole note" written below it and a blank line underneath. The second staff contains a half note with a blank line underneath. The third staff contains a quarter note with a blank line underneath. The fourth staff contains an eighth note with a blank line underneath. The fifth staff contains a sixteenth note with a blank line underneath.

This little melody has lost its bar-lines! Can you draw them?



Please write that Major scale that begins on middle C



Please write the indicated interval



**If this worksheet was challenging, please return your packet to the office.  
If this worksheet was easy, please continue onto worksheet #2.**

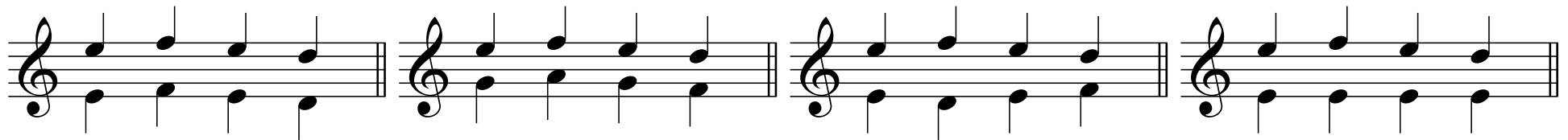
# Worksheet # 2

Please add the notes asked for



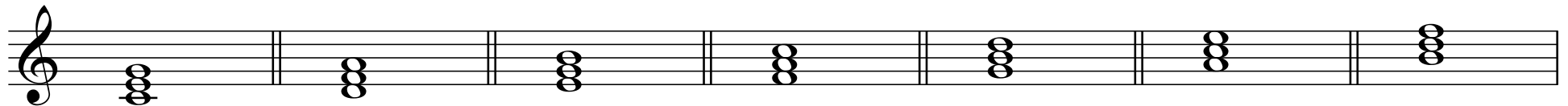
A musical staff in treble clef divided into four measures by double bar lines. Each measure contains a single note on a staff line. Below each measure is a text label: *whole-step above*, *half-step below*, *Major third above*, and *perfect fourth below*.

For each measure, describe the motion between the notes with the stems-up and the notes with the stems-down



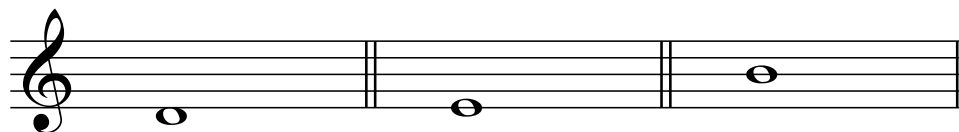
A musical staff in treble clef divided into four measures by double bar lines. Each measure contains two notes: one with a stem pointing up and one with a stem pointing down. The notes are positioned on the staff lines to illustrate various intervals and motions.

Identify the quality of these seven triads



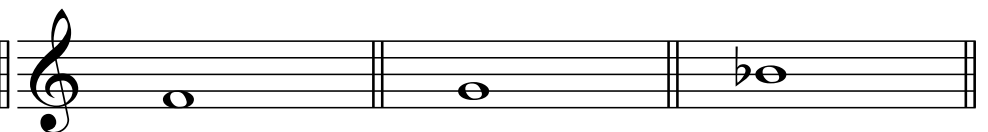
A musical staff in treble clef divided into seven measures by double bar lines. Each measure contains a triad of three notes stacked vertically on the staff lines.

Construct Major triads, assuming that the given notes are the roots of the chord



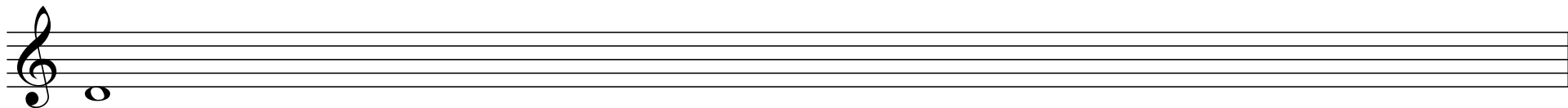
A musical staff in treble clef divided into three measures by double bar lines. Each measure contains a single note on a staff line, intended to be the root of a major triad.

Construct minor triads, assuming that the given notes are the thirds of the chord



A musical staff in treble clef divided into three measures by double bar lines. Each measure contains a single note on a staff line, intended to be the third of a minor triad.

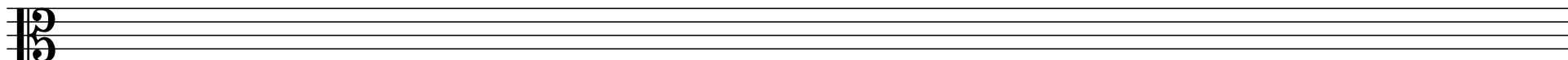
Write the natural minor scale that begins on D—don't forget the accidentals!



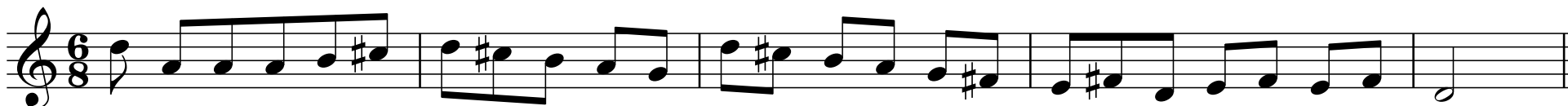
Write the melodic minor scale that begins on A—don't forget the accidentals!



Write the chromatic scale from middle C to the octave above



Identify ANY rhythmic errors you see in the following passage.



**If this worksheet was challenging, please return your packet to the office.  
If this worksheet was easy, please continue onto worksheet #3.**

# Worksheet # 3

Identify the quality of these intervals

Three musical staves are shown. The first staff is in treble clef with a 4/4 time signature, containing two pairs of notes: G4 to A4 and G#4 to A4. The second staff is in bass clef with a 4/4 time signature, containing two pairs of notes: G3 to F#3 and G3 to G#3. The third staff is in alto clef with a 3/4 time signature, containing two pairs of notes: G4 to F#4 and G4 to F4.

Notate the following intervals

Six musical staves are shown, each with a single note and a fermata. The notes are: G4 (treble clef), F4 (treble clef), G3 (bass clef), A2 (bass clef), G4 (alto clef), and F4 (alto clef). Below each staff is a label: *m6 down*, *M7 down*, *diminished5 down*, *A2 up*, *P5 up*, and *m3 up*.

Identify the quality of these seventh chords

A single musical staff in treble clef with a 4/4 time signature, containing five seventh chords: F#7, G7, Bb7, C#7, and D7.

Identify the type of cadences at the three fermatas

Three musical systems are shown, each with a treble and bass clef staff in 4/4 time. Each system contains four chords with a fermata over the final chord. System 1: C major triad, F major triad, C major triad, C major triad. System 2: C major triad, F major triad, C major triad, F major triad. System 3: C major triad, F major triad, C major triad, F major triad.

2

What is wrong with the motion between the Alto and Bass voices in this example?

Complete the Tenor part to follow the progression

Realize the progression for four voices

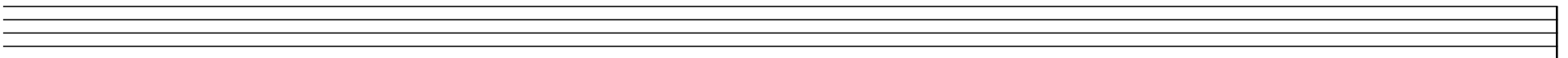
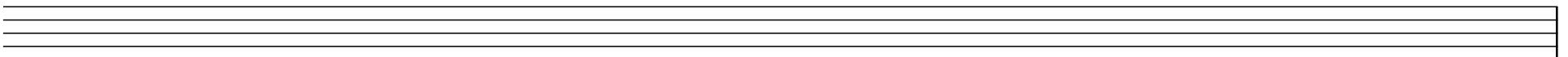
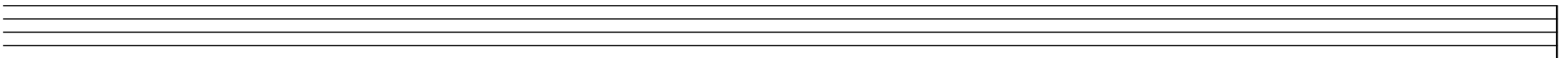
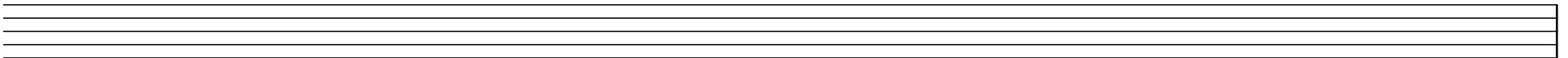
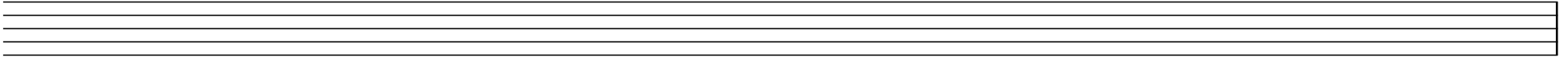
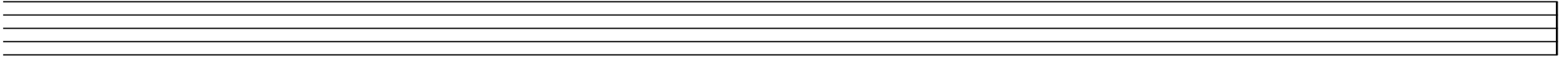
I IV<sup>6</sup><sub>4</sub> I V<sup>6</sup><sub>5</sub> I vi IV V

Label the intervals between bass and soprano and identify the contrapuntal device used in each measure

**Please return your packet to the office.  
Bonus worksheets follow...**

# Bonus Worksheet # 1

Use these blank staves, or a page from your own staff paper, to compose a piece of music for whichever instrument(s) you choose



**Please return your packet to the office.  
One more bonus worksheet follows...**

Analys: Comment on and critique your choice of the following three examples

## Bonus Worksheet # 2

**A**

Musical notation for example A, featuring a single treble clef staff in 2/4 time with a key signature of one sharp (F#). The melody consists of eighth and quarter notes. Dynamics include *p* (piano) and *mf* (mezzo-forte), with accents (*>*) placed over several notes.

**B**

Musical notation for example B, consisting of two staves (treble and bass clefs) in 3/4 time. The melody is written in the treble clef and the bass line in the bass clef. Both parts feature long, sweeping phrases indicated by large curved lines (slurs) spanning multiple measures.

**C**

Musical notation for example C, consisting of two staves (treble and bass clefs) in 4/4 time with a key signature of two flats (Bb and Eb). The melody is written in the treble clef and the bass line in the bass clef. The notation includes various rhythmic values such as eighth, quarter, and half notes, along with rests.

Please return your packet to the office.